



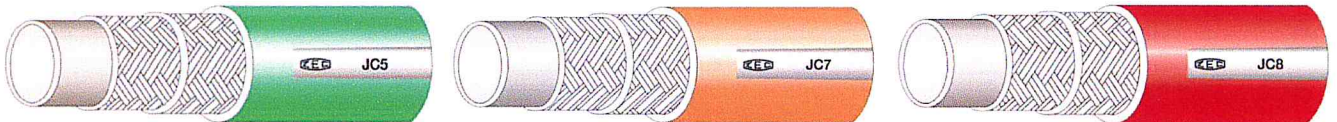
Since 1961

TUBI TERMOPLASTICI - THERMOPLASTIC HOSES



SEWER JETTING HOSE – 2500 / 3000 / 3600PSI

PRODUCT UPGRADING



DATA SHEET – JC5 HOSES

HOSE REFERENCE	ID INSIDE DIAMETER		OD OUTSIDE DIAMETER		BP MIN. BURST PRESSURE @ 23°C		WP MAX. WORKING PRESSURE		MIN. BEND RADIUS		WEIGHT		FERRULE CODE
	inch	mm	mm	inch	bar	psi	bar	psi	mm	inch	g/m	lbs/ft	
	JC567009	1/2"	13.0 ±0.2	21.0 ±0.2	0.827	437	6350	175	2540	95	3.74	210	
JC587009	3/4"	19.2 ^{+0.3} _{-0.2}	29.5 ^{+0.3} _{-0.2}	1.161	437	6350	175	2540	120	4.72	380	0.255	BP34JC7
JC597009	1"	25.6 ±0.3	37.0 ±0.3	1.456	437	6350	175	2540	150	5.91	555	0.373	BP1JC7
JC5107009	1 1/4"	32.0 ±0.4	45.7 ±0.4	1.799	437	6350	175	2540	235	9.25	790	0.531	BP114JC7

DATA SHEET – JC7 HOSES

HOSE REFERENCE	ID INSIDE DIAMETER		OD OUTSIDE DIAMETER		BP MIN. BURST PRESSURE @ 23°C		WP MAX. WORKING PRESSURE		MIN. BEND RADIUS		WEIGHT		FERRULE CODE
	inch	mm	mm	inch	bar	psi	bar	psi	mm	inch	g/m	lbs/ft	
	JC767001	1/2"	13.0 ±0.2	22.4 ±0.2	0.882	690	10000	275	4000	75	2.95	277	
JC777001	5/8"	16.0 ±0.2	26.5 ±0.2	1.043	550	7975	220	3200	100	3.94	372	0.250	BP34R7
JC787001	3/4"	19.2 ^{+0.3} _{-0.2}	29.8 ^{+0.3} _{-0.2}	1.173	517	7500	207	3000	120	4.72	431	0.290	BP34JC7
JC797001	1"	25.6 ±0.3	37.3 ±0.3	1.469	517	7500	207	3000	150	5.91	580	0.390	BP1JC7
JC7107001	1 1/4"	32.0 ±0.4	46.0 ±0.4	1.811	500	7250	200	2900	235	9.25	848	0.570	BP114JC7
JC7127001	1 1/2"	38.2 ±0.4	54.0 ±0.5	2.126	500	7250	200	2900	375	14.76	1186	0.797	BP112JC7

DATA SHEET – JC8 HOSES

HOSE REFERENCE	ID INSIDE DIAMETER		OD OUTSIDE DIAMETER		BP MIN. BURST PRESSURE @ 23°C		WP MAX. WORKING PRESSURE		MIN. BEND RADIUS		WEIGHT		FERRULE CODE
	inch	mm	mm	inch	bar	psi	bar	psi	mm	inch	g/m	lbs/ft	
	JC867005	1/2"	13.0 ±0.2	22.4 ±0.3	0.882	862	12500	345	5000	100	3.94	292	
JC887005	3/4"	19.2 ^{+0.3} _{-0.2}	29.8 ^{+0.3} _{-0.2}	1.173	625	9060	250	3625	120	4.72	460	0.309	BP34JC7
JC897005	1"	25.6 ±0.3	37.3 ±0.3	1.469	625	9060	250	3625	150	5.91	643	0.432	BP1JC7
JC8107005	1 1/4"	32.0 ±0.4	46.0 ±0.4	1.811	625	9060	250	3625	235	9.25	985	0.662	BP114JC7

Technical features

- **Caratteristiche tecnico-costruttive:** Anima interna in compound termoplastico, rinforzo con trecce in filato poliestere e fibra aramidica e rivestimento esterno in poliuretano anti-abrasione.
- **Applicazioni:** Le tubazioni della serie JC7 e JC8 sono state create per passaggio acqua nel settore della pulizia ad alta pressione.
- **Rapporto di sicurezza:** 1:2,5
- **Temperature di utilizzo:** da -40°C a +55°C (-40°F a +131°F).
- **Variatione di lunghezza:** +0% -3%
- **Lunghezza pezzature:** 80-100-120-150-180-200-250 m e a richiesta fino a 320 m.
- **Technical-constructive features:** Internal core in thermoplastic compound, reinforcement with polyester-aramid fiber braids, exterior covering in anti-abrasion polyurethane.
- **Applications:** The JC7 and JC8 series hoses have been created for water applications in the high pressure industrial and sewer cleaning field.
- **Safety ratio** 1:2,5
- **Working temperature:** from -40°C to +55°C (-40°F to +131°F).
- **Length Variation:** +0% -3%
- **Reels length:** 80-100-120-150-180-200-250 m. Upon request up to 320 m.

Same pressure – better performances

- **Improved Flexibility**

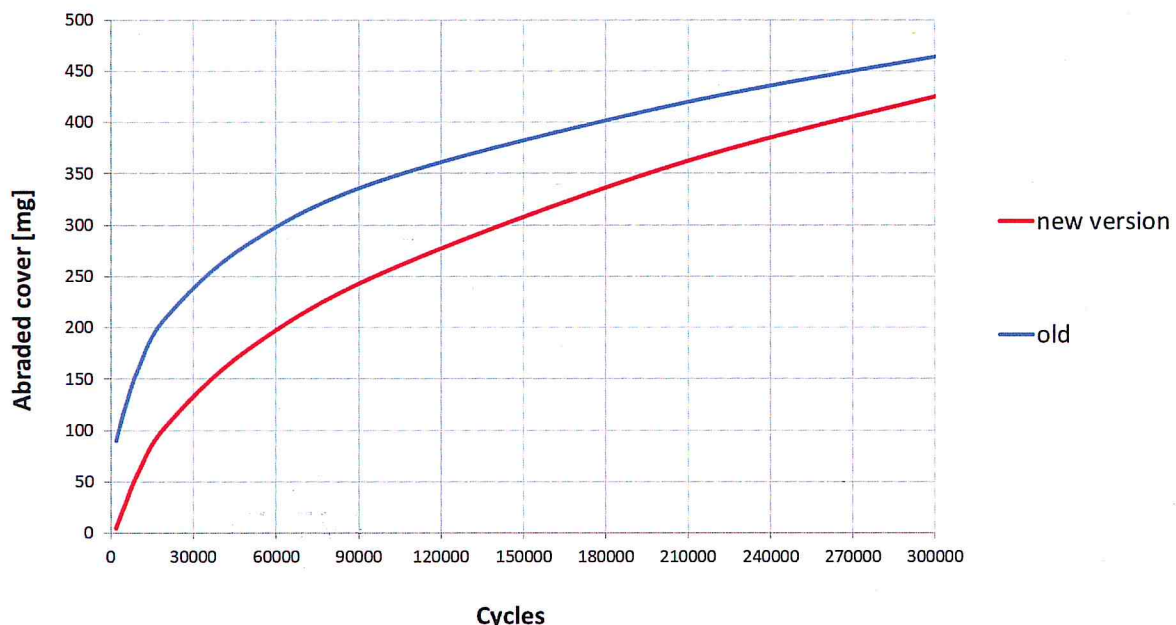
Flexibility has been improved thanks to a more flexible inner core made of **soft PELD based compound**;

- **Faster “Rolling-up” operation**

Less “**sticky**” hose surface will help rolling up operations for OEM and after sewage;

- **Improved Abrasion resistance**

Resistance against abrasion has been improved thanks to the use of and **harder and smoother PU COMPOUND on cover**. The abrasion test has been done according to **ISO 6945:2001**. The new cover reach more than **1.000.000 cycle without braid exposure**.



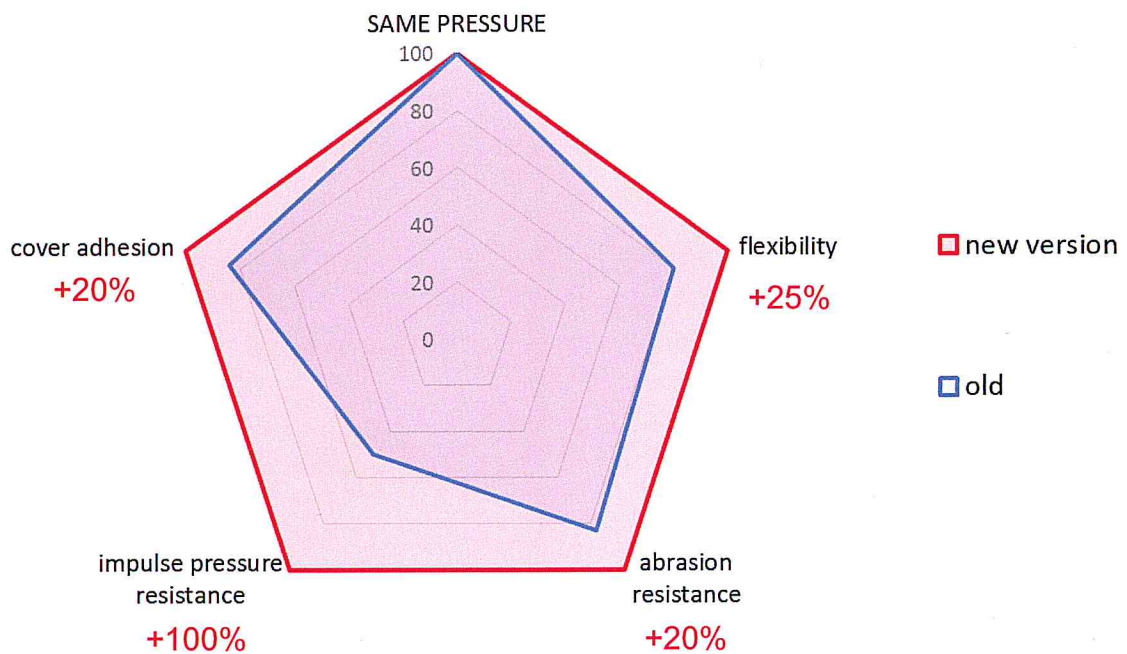
- **Improved reliability: double impulse performance**

The new JC5/7/8 series hose has reached more than 300.000 impulse pressure during the **SAE J517 impulse test**.

- **Improved Cover adhesion**

Using a new braiding geometry and materials. This means a better adhesion of the cover material and a better resistance against **particularly stressing sewage operations, heavy handling by operator, not proper re-crimping operations**;

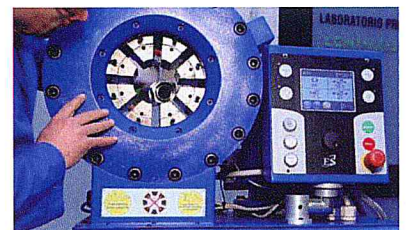
Notes: all above improvements have been done **WITHOUT** modifying any basic hose characteristics, in terms of ID, OD, crimping data, colour, codes.



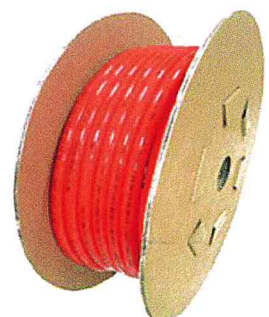
Volumetric Expansion

Accessories and Services

OD EXPANSION TEST AT MAX WP		
HOSE	ID	EXPANSION mm
JC767001	1/2"	0.8
JC777001	5/8"	1.0
JC787001	3/4"	0.8
JC797001	1"	1.4
JC107001	1" 1/4	1.4

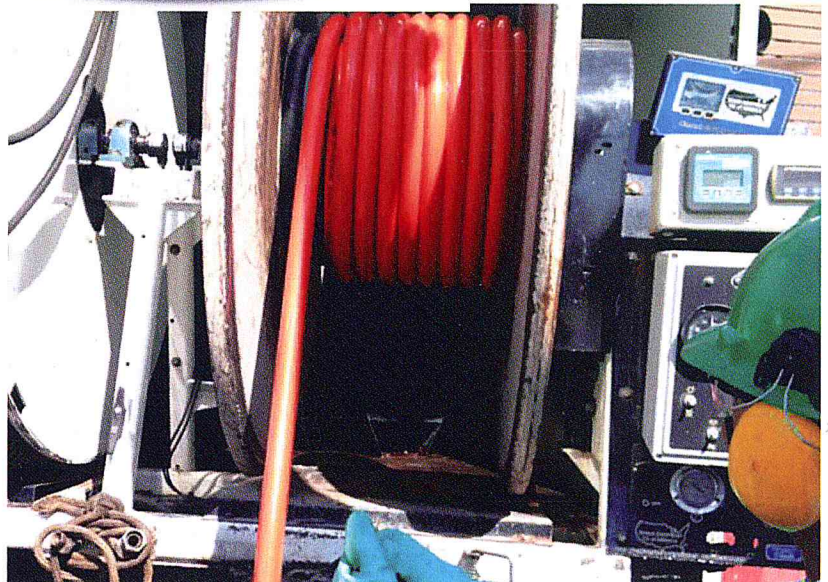


- **Wooden reels**
- **Carton board reels**
- **Hose assembly service**





Your Global Partner for Thermoplastic Solutions



ZEC S.p.A.

Via Lungolorno 11 – 43052 Colorno (PR) – Italy

VAT: IT01720400348 – REA: PR - 173914

Tel.: (+39) 0521 816631 – Fax: (+39) 0521 816772 – info@zecspa.com – www.zecspa.com



COMPANY WITH QUALITY MANAGEMENT

SYSTEM CERTIFIED BY DNV

= ISO 9001:2008 =

Rev. 0 – 01/04/2016