



- Raccordi sferici e accessori per irrigazione e drenaggio.
- Accessori e attrezzature impianti zootecnici.
- Architetture industriali in acciaio.



Officine Meccaniche Vezzani Elisabetta S.r.l.
 Via L. Einaudi, 9-9/A - S. Giacomo 42016 Guastalla (RE) Italy
 Tel. +39 0522 831360 - Fax +39 0522 831007
 E-mail: info@omve.it - www.omve.it
 Reg. Impr. RE 00487790354 R.E.A. 135799 P.IVA/Cod.fisc 00487790354

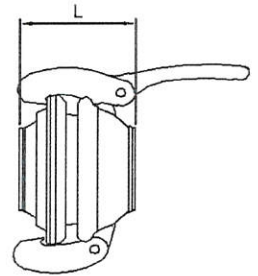
CARATTERISTICHE TECNICHE GIUNTO TIPO "ANFOR"

TECHNICAL DATA "ANFOR" TYPE COUPLING

Art. 1A1



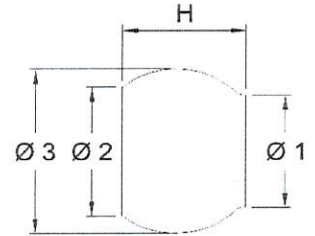
	Ø60	Ø80	Ø100	Ø120	Ø150	Ø200	Ø250
L	90	110	125	135	150	180	225



Art. 1A1A



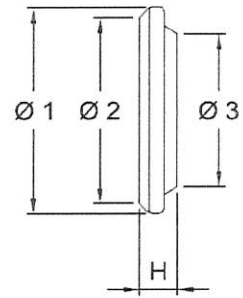
Ø	Ø1	Ø2	Ø3	H	Sp/Tk	Kg
60	56	65	85	63	2	0,26
80	77	85	117	90	2,5	0,65
100	95	108	140	100	2,5	0,9
120	115	122	159	110	2,5	1,2
150	144	157	186	116	2,5	1,45
200	195	210	243	136	3	2,6
250	235	250	295	170	3,5	5,2



Art. 1A1B



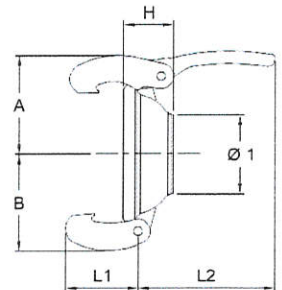
Ø	Ø1	Ø2	Ø3	H	Sp/Tk	Kg
60	111	92	76	23	2	0,185
80	151	122	106	29	2,5	0,465
100	173	151	125	30	2,5	0,56
120	201	174	152	35	3	0,9
150	232	197	176	42	3	1,25
200	298	260	230	45	3,5	2,1
250	360	305	290	57	4	3,45



Art. 1A1C



Ø	Ø1	A	B	L1	L2	H	Kg
60	55	77,5	77,5	50	150	45	0,65
80	76	102,5	102,5	70	150	54	0,86
100	95	120	120	87	155	60	1,4
120	117	135	135	87	190	64	2,1
150	145	145	145	90	190	74	2,4
200	192	190	190	100	280	93	4,3
250	244	220	220	100	280	107	5,7





- Raccordi sferici e accessori per irrigazione e drenaggio.
- Accessori e attrezzature impianti zootecnici.
- Architetture industriali in acciaio.



Officine Meccaniche Vezzani Elisabetta S.r.l.
Via L. Einaudi, 9-9/A - S.Giacomo 42016 Guastalla (RE) Italy
Tel. +39 0522 831360 - Fax +39 0522 831007
E-mail: info@omve.it - www.omve.it
Reg. Impr. RE 00487790354 R.E.A. 135799 P.IVA/Cod.fisc 00487790354

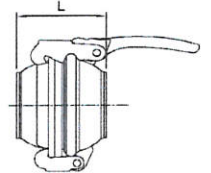
CARATTERISTICHE TECNICHE GIUNTO TIPO "ANFOR"

TECHNICAL DATA "ANFOR" TYPE COUPLING

Art. 1A



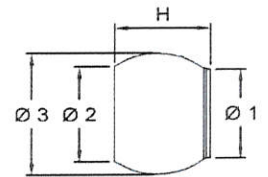
	Ø60	Ø80	Ø100	Ø120	Ø150	Ø200	Ø250	Ø300	Ø400
L	90	110	125	135	150	180	225	260	330



Art. 1A1A



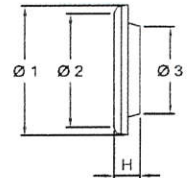
Ø	Ø1	Ø2	Ø3	H	Sp/Tk	Kg
300	310	390	350	70	4,5	8,5
400	410	490	415	95	5	17,5



Art. 1A1B



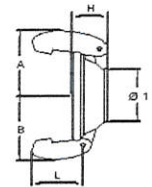
Ø	Ø1	Ø2	Ø3	H	Sp/Tk	Kg
300	450	390	350	70	5	6,5
400	570	507	470	95	6	12



Art. 1A1C



Ø	Ø1	A	B	L	H	Kg
300	310	290	290	175	130	13,4
400	410	305	305	245	160	24,1



PRESSIONE DI ESERCIZIO

WORKING PRESSURE

VERSIONE 2 GANCI / 2 HOOKS VERSION

Ø	Bar
60	19
80	16
100	14
120	13
150	11
200	6
250	5
300	5
400	5



VERSIONE 3 GANCI / 3 HOOKS VERSION

Ø	Bar
60	24
80	21
100	19
120	17
150	16
200	10
250	8
300	8
400	7

